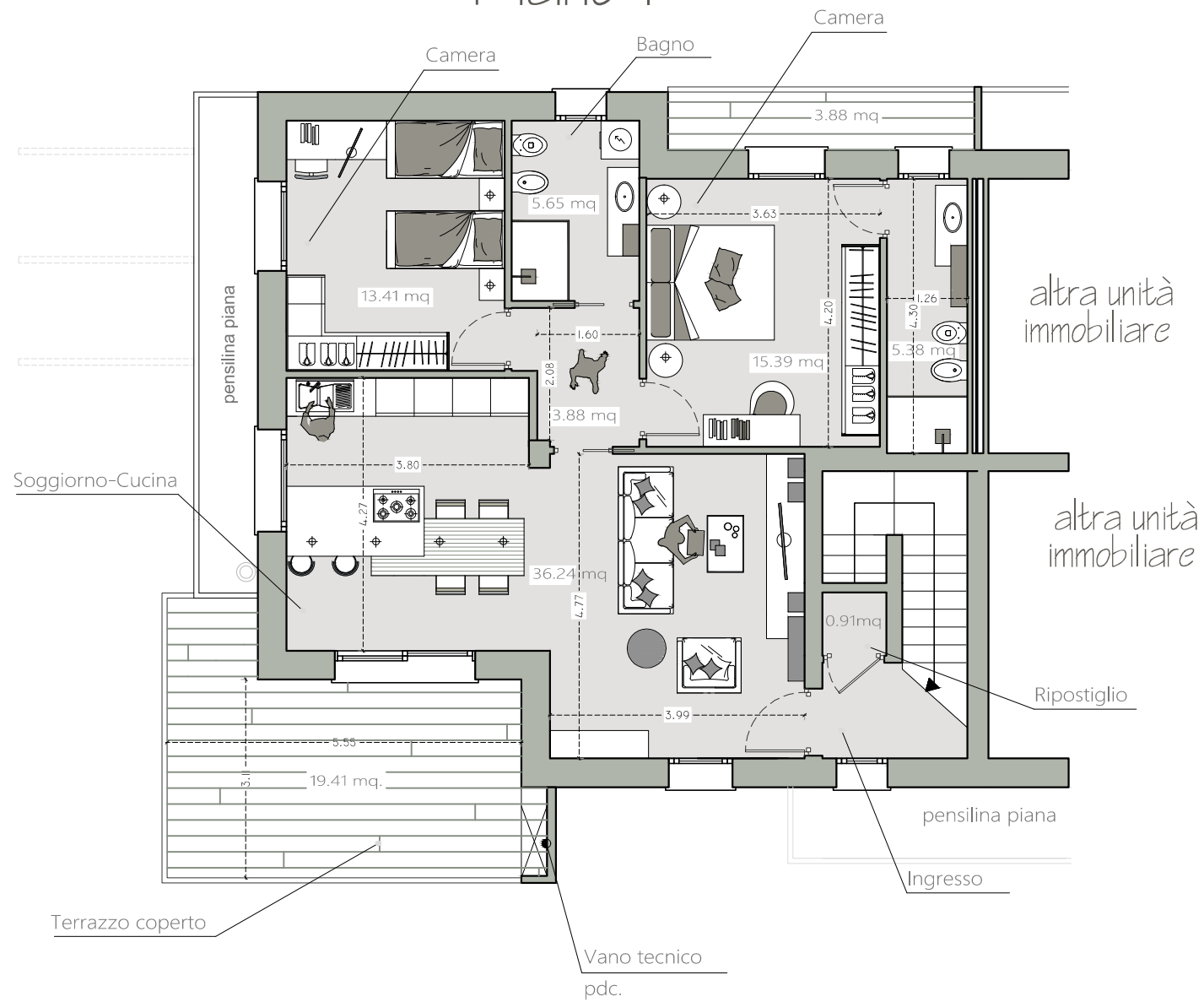
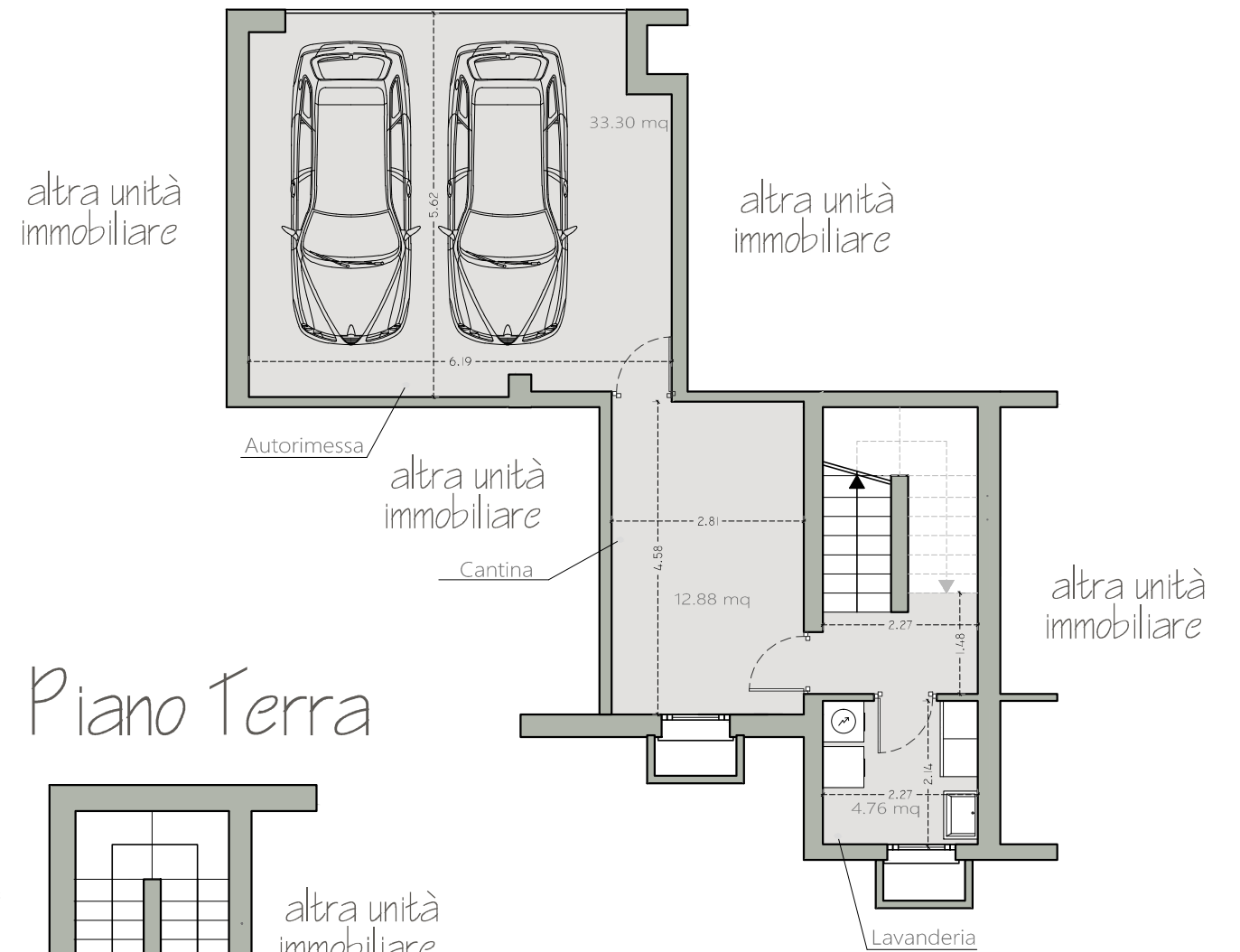


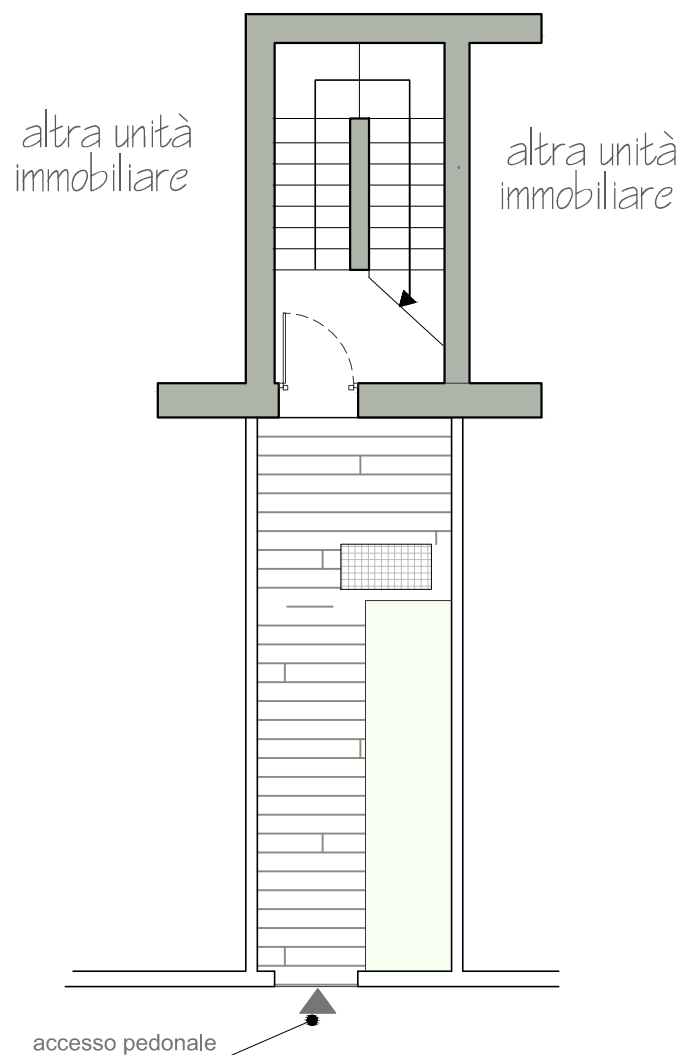
# Piano 1°



# Piano interrato



# Piano Terra



## Via dello Sport (1° stralcio) Unità n°2

SUPERFICIE	MQ. 113
INGRESSO INDIPENDENTE	
SCALA INDIPENDENTE INTERNA	
2 CAMERE	
2 BAGNI	
AUTORIMESSA DOPPIA	MQ. 33
CANTINA	MQ 12
LAVANDERIA INTERRATA	4.76 MQ
TERRAZZO COPERTO	MQ.19